



Max pressure : 17 m  
Max flow : 31 m<sup>3</sup>/h

### APPLICATIONS :

- CHEMICAL (ACID, ALKALINE,...)
- FOOD (OIL, VINEGAR, GRAPE JUICE)
- WATER TREATMENT

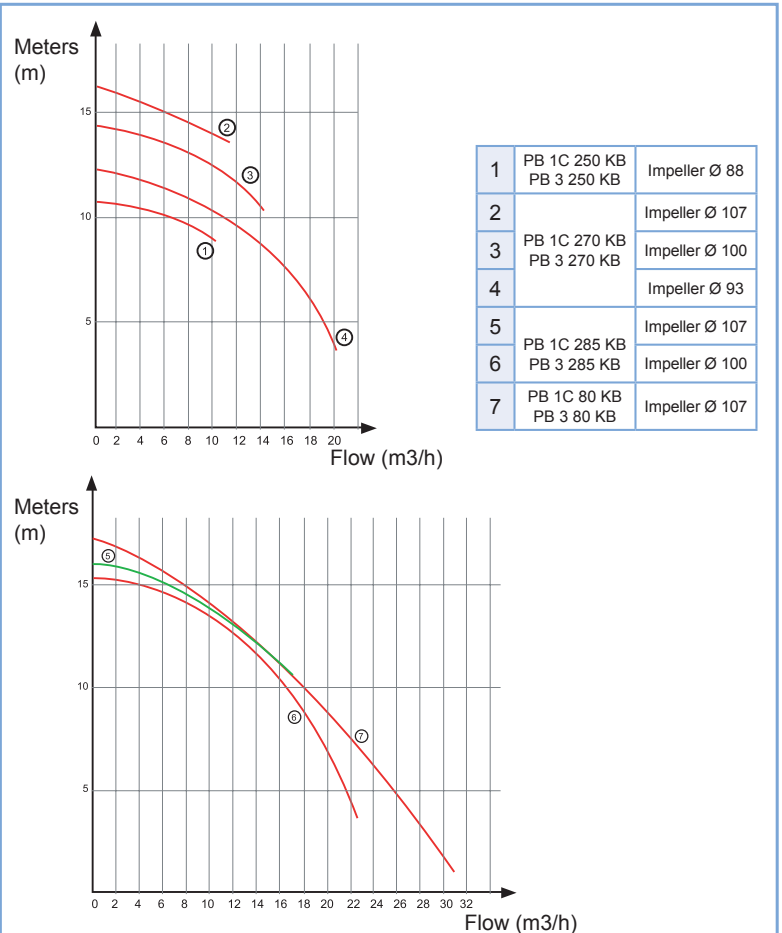
### TECHNICAL FEATURES :

- PUMP BODY IN PP
- POLYAMIDE 6 IMPELLER
- SLEEVE
- CAPACITOR INSIDE THE TERMINAL BOX (SHOCKS PROTECTION)
- ABS FAN COVER (ATTRITION RESISTANCE)
- NITRIL MECHANICAL SEAL
- 8 OUTLET POSITIONS
- 5 TERMINAL BOX POSITIONS
- 2 SIZES OF TERMINAL BOX
- NO RETENTION (FROST PROTECTION)
- CLASS F INSULATION
- IPX5 PROTECTION CLASS
- WORKING TEMPERATURE : FROM -5°C TO +90°C
- 3 DRAIN POSITIONS

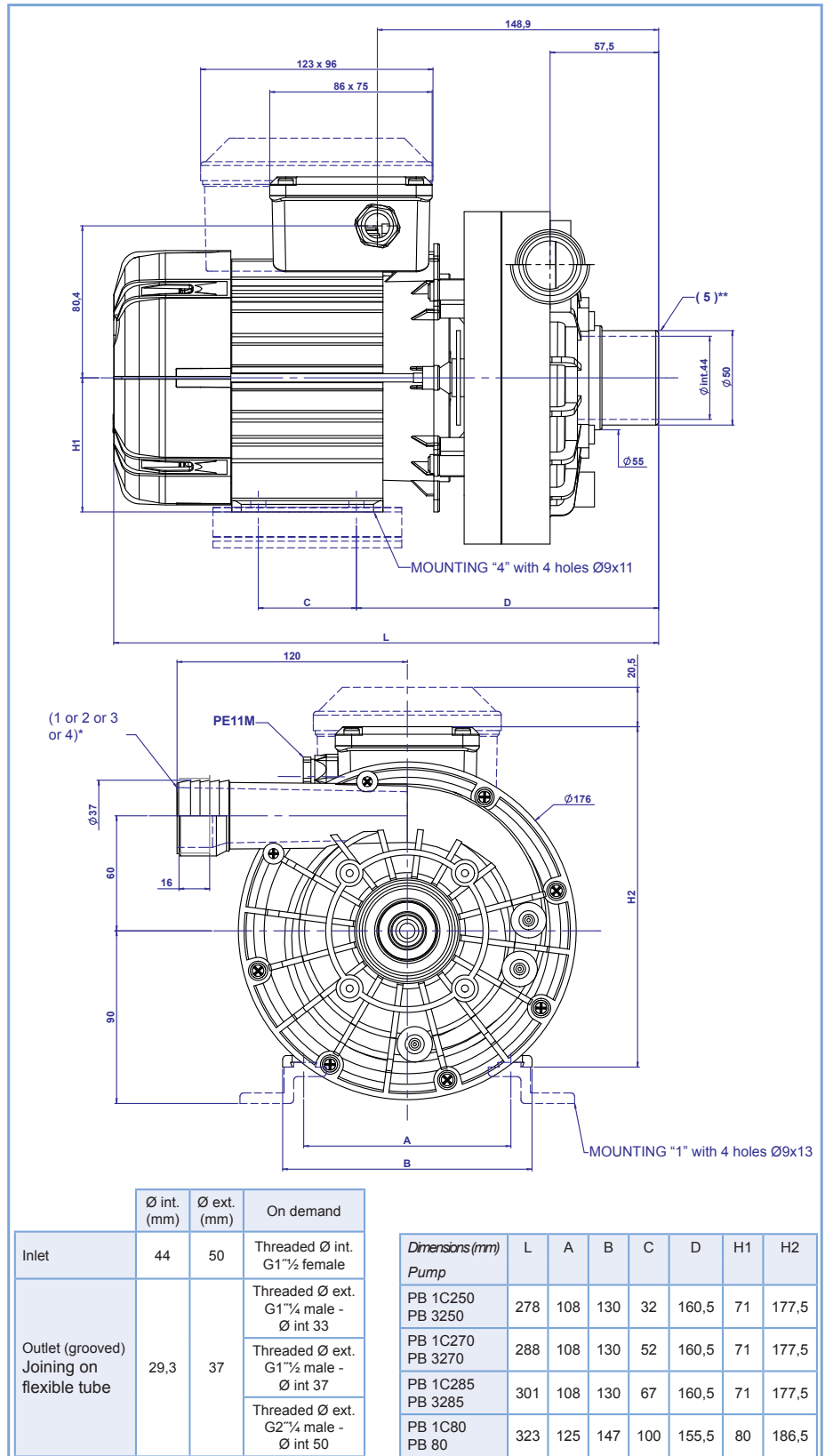
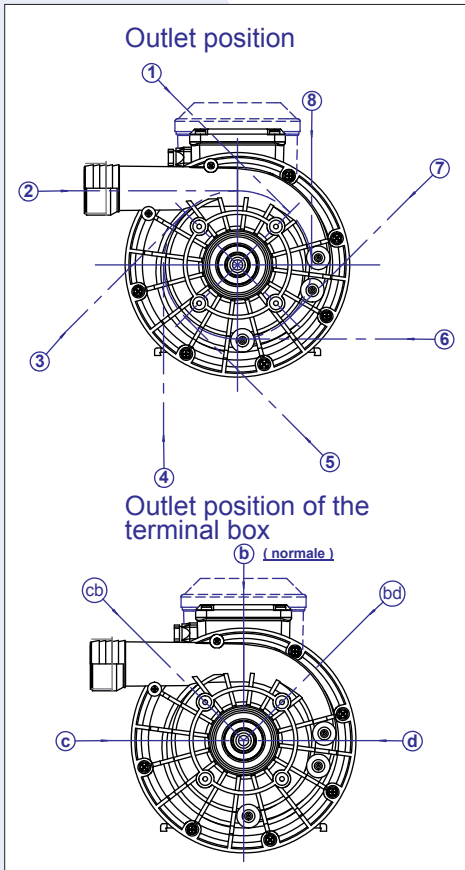
### CARACTÉRISTIQUES TECHNIQUES

Designation	Single phase with capacitor 230V - 50Hz	Three-phase 230/400V - 50Hz	Inlet power (W)	Outlet power (W)	Power supply 230V - A	Cos φ
PB 1C250 K4B	•		560	400	2,50	0,98
PB 3250 K4B		•			1,85	0,75
PB 1C270 K4B	•		900	600	3,95	0,98
PB 3270 K4B		•	875		2,95	0,74
PB 1C285 K4B	•		1150	810	5,10	0,98
PB 3285 K4B		•	985	800	3,40	0,73
PB 1C80 K1B	•		1350	1100	6,10	0,96
PB 80 K1B		•	1360		4,20	0,81

### PERFORMANCES CURVES



## DIMENSIONS



### OPTIONS :

OTHER VOLTAGE AND INTENSITY  
ON DEMAND

VERTICAL PUMP ADAPTATION

DIFFERENT INLET (SIZE -  
THREADED, GROOVED, SMOOTH)

### GENERALS :

THESE PUMPS MEET THE  
STANDARDS AND GUIDELINES IN  
FORCE

### COMPLY WITH STANDARDS :

EN 60 335 - 1  
EN 60 335 - 2 - 41  
CE

	Ø int. (mm)	Ø ext. (mm)	On demand
Inlet	44	50	Threaded Ø int. G1½ female
Outlet (grooved) Joining on flexible tube	29,3	37	Threaded Ø ext. G1¾ male - Ø int 33
			Threaded Ø ext. G1¾ male - Ø int 37
			Threaded Ø ext. G2¾ male - Ø int 50

Dimensions (mm)	L	A	B	C	D	H1	H2
<b>Pump</b>							
PB 1C250 PB 3250	278	108	130	32	160,5	71	177,5
PB 1C270 PB 3270	288	108	130	52	160,5	71	177,5
PB 1C285 PB 3285	301	108	130	67	160,5	71	177,5
PB 1C80 PB 80	323	125	147	100	155,5	80	186,5

## CAUTIONS AND LIMITATIONS OF USING



- Do not install the pump above the water level (no suction pump)
- Pump advises for waterliquid type, please contact us for another using
- Do not run dry the pump
- Do not use the pump under the minimum pressure
- Do not put the pump into a confined place